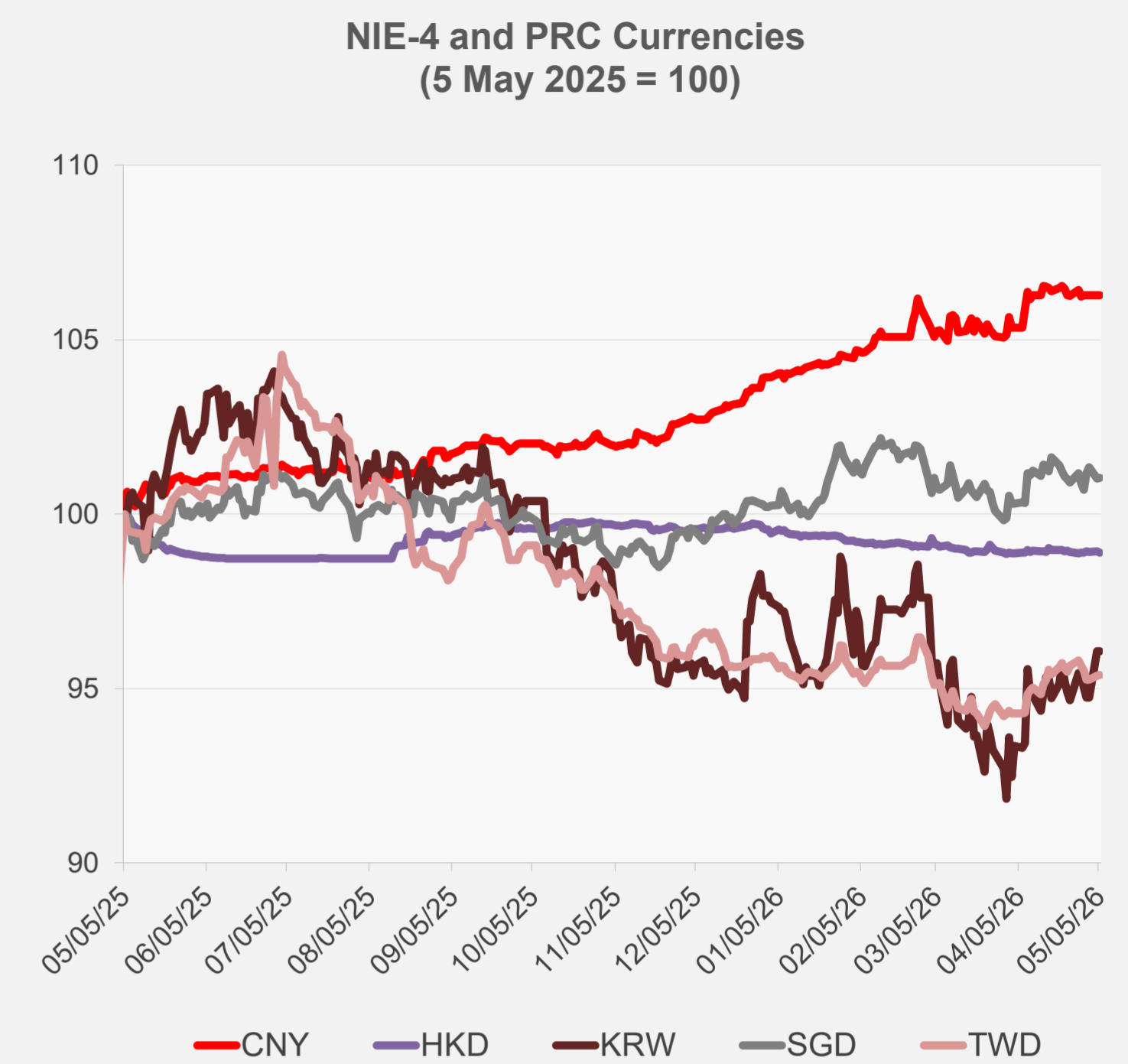
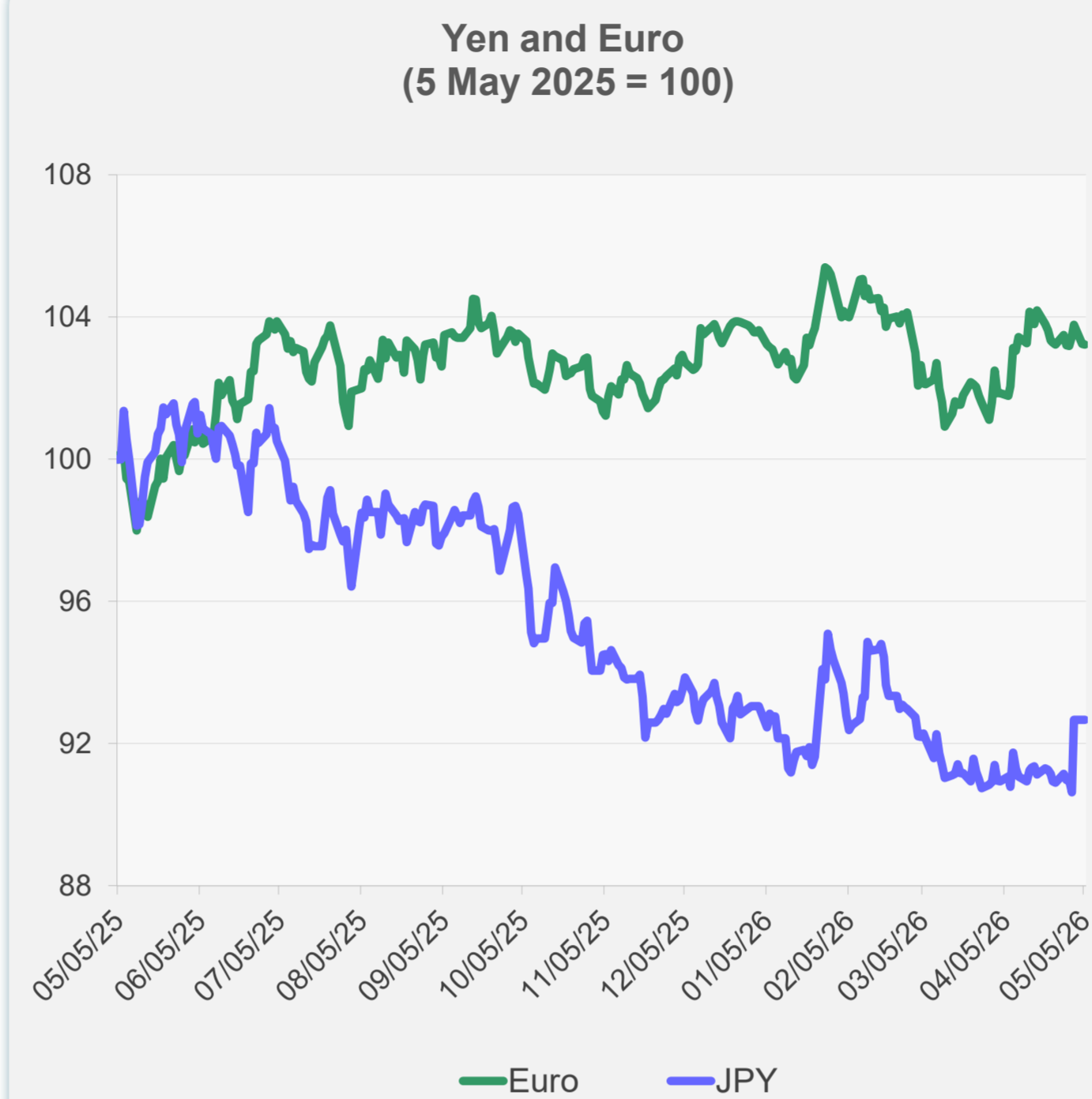
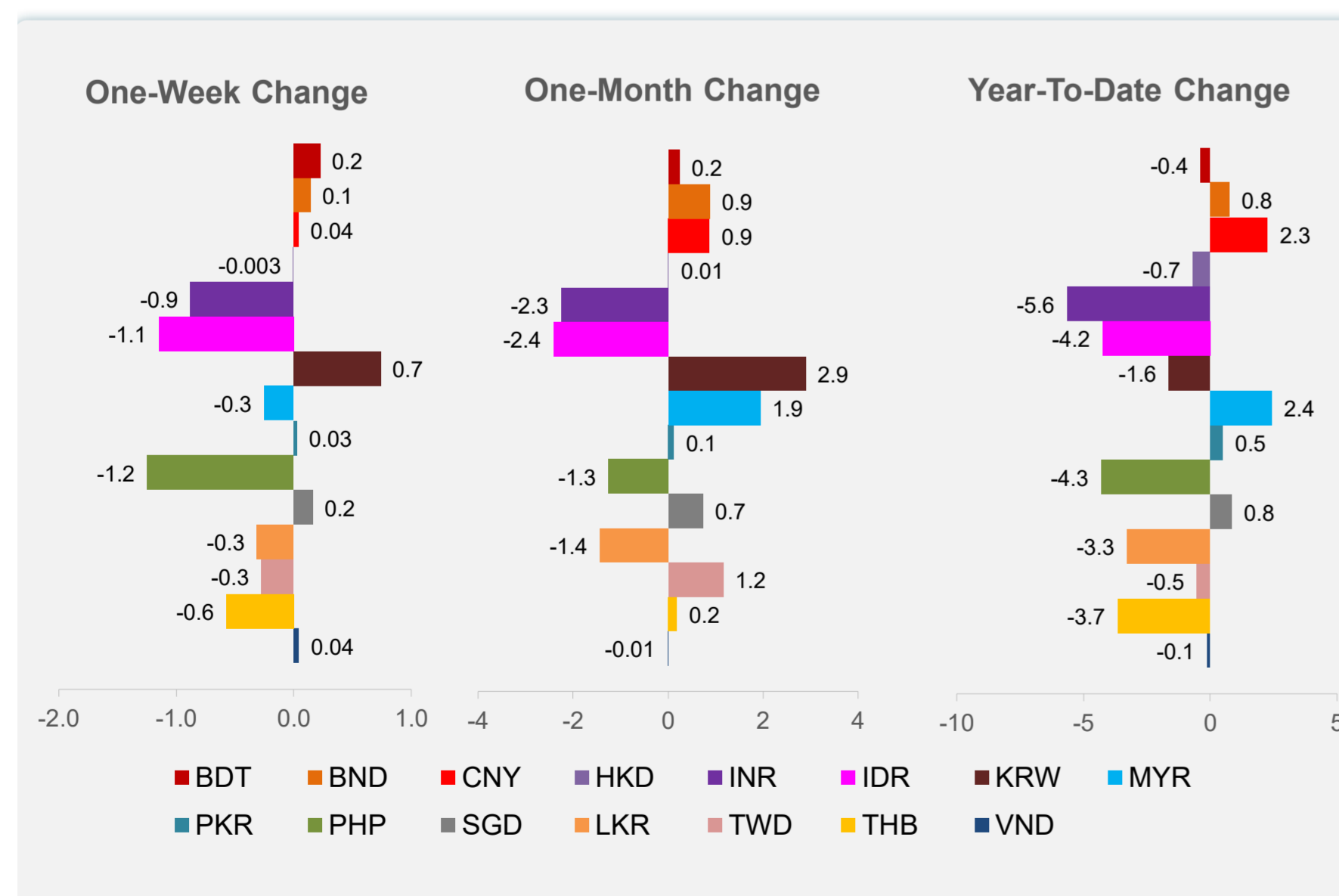
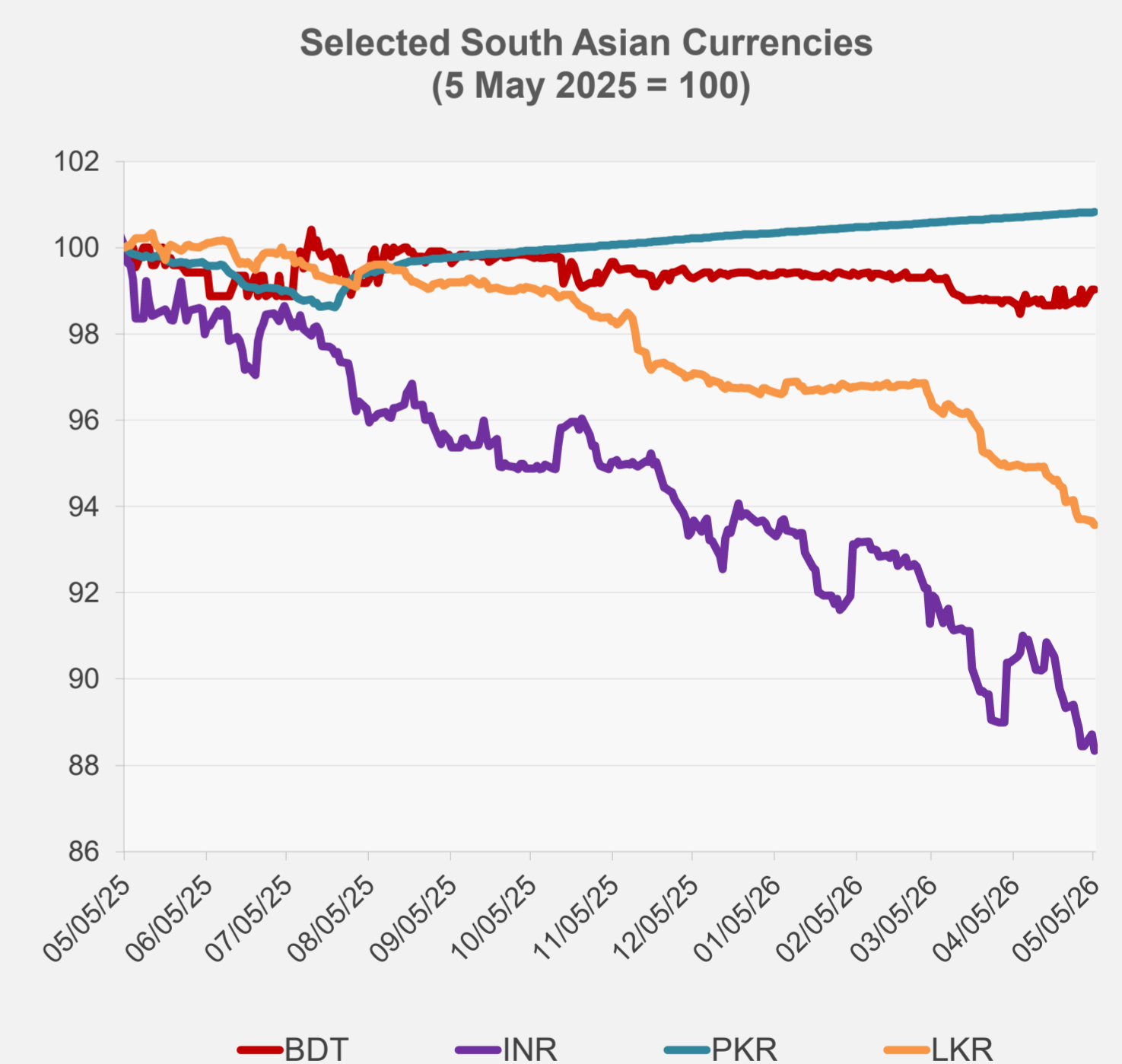
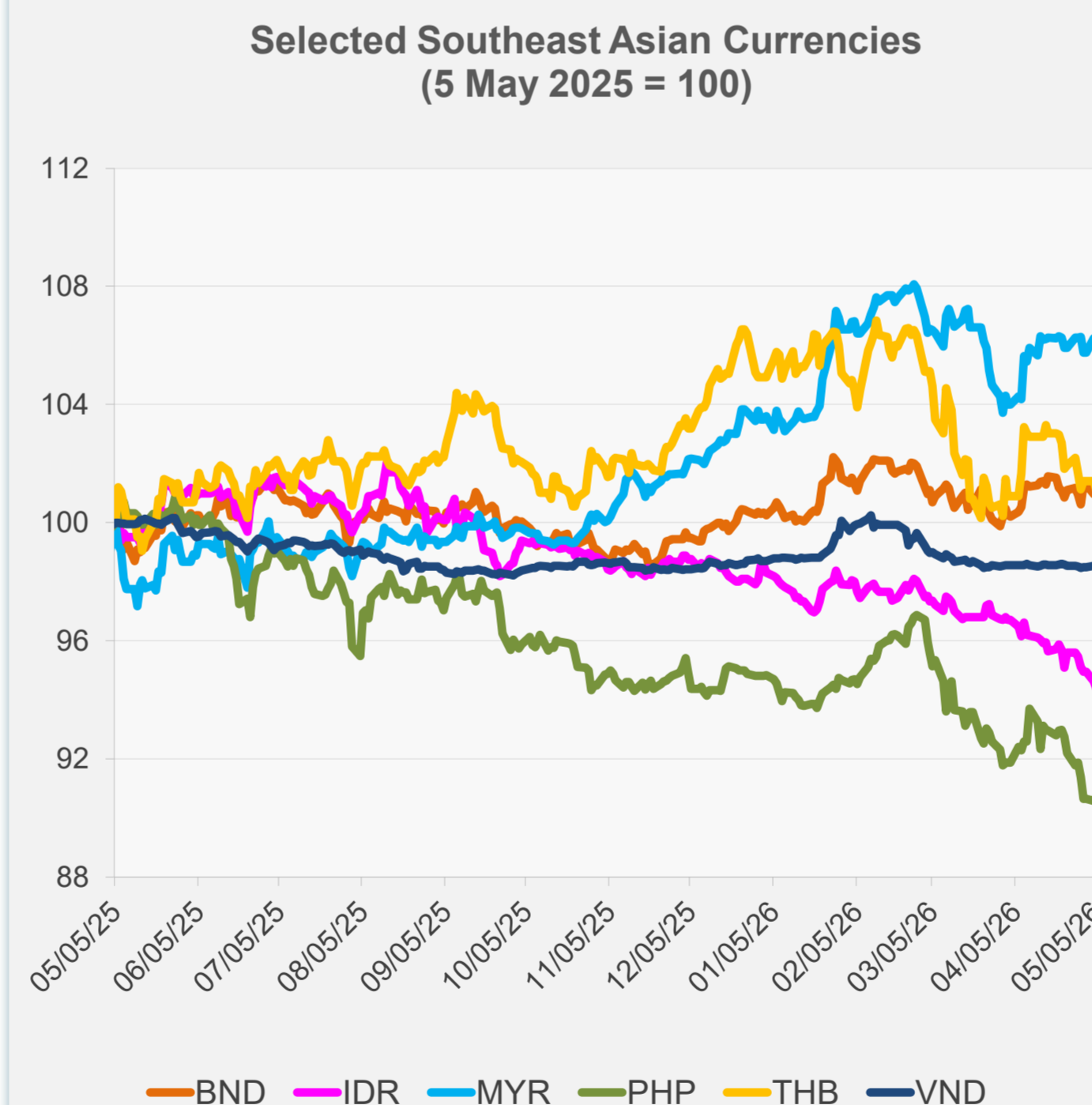


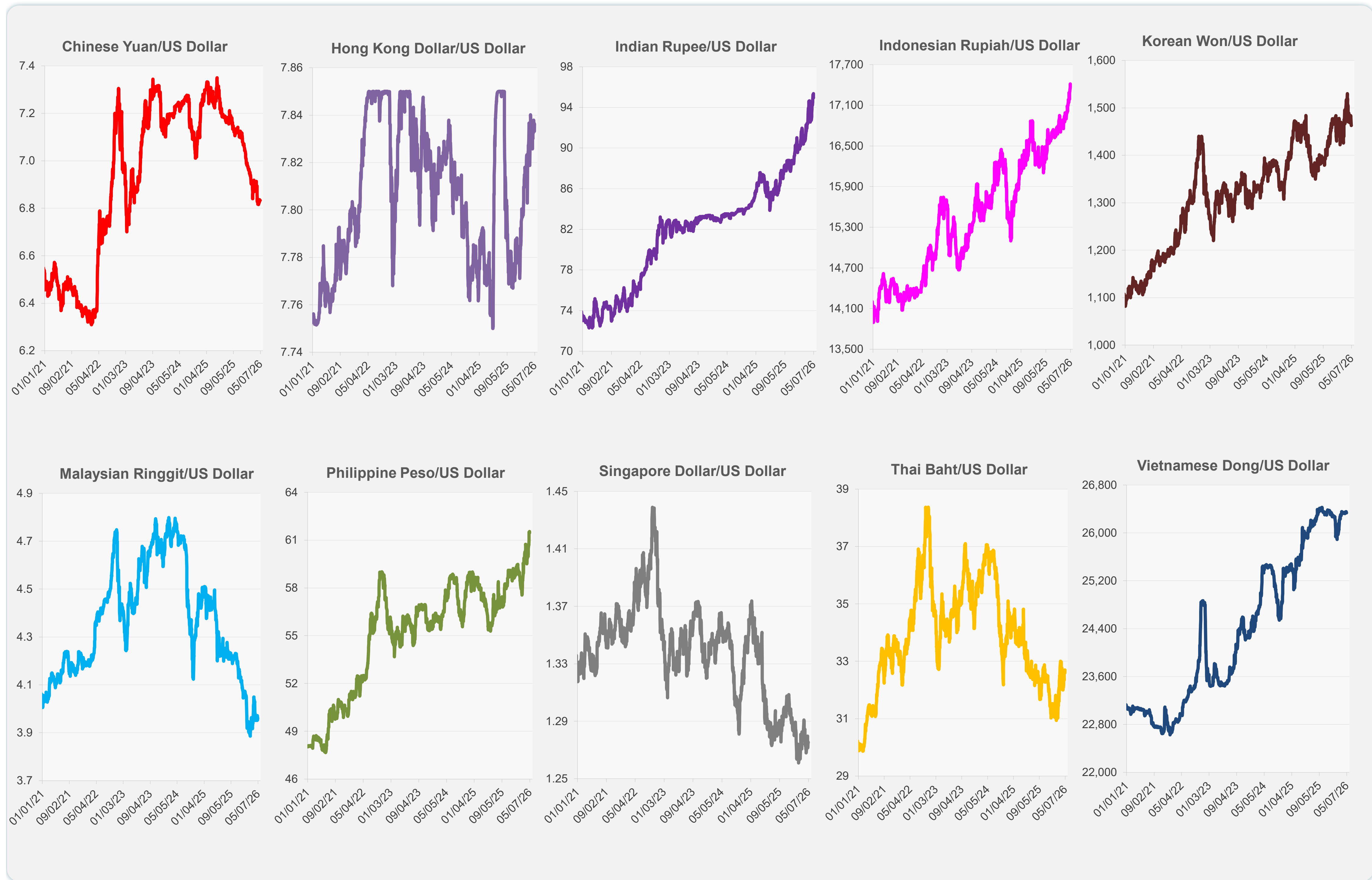
	Latest Closing	% change from Previous Day	% change from 01-Jan-26
Euro	0.85	-0.02	-0.33
Japanese yen (JPY)	156.62	0.00	-0.41
Bangladeshi taka (BDT)	122.70	0.00	-0.37
Brunei dollar (BND)	1.28	0.12	0.75
Chinese yuan (CNY)	6.83	0.00	2.26
Hong Kong dollar (HKD)	7.84	-0.04	-0.67
Indian rupee (INR)	95.36	-0.44	-5.64
Indonesian rupiah (IDR)	17,415.00	-0.26	-4.25
Korean won (KRW)	1,462.80	0.00	-1.63
Malaysian ringgit (MYR)	3.96	-0.23	2.42
Pakistan rupee (PKR)	278.72	0.01	0.50
Philippine peso (PHP)	61.45	0.15	-4.30
Singapore dollar (SGD)	1.28	0.03	0.84
Sri Lanka rupee (LKR)	320.11	-0.11	-3.28
Taipei,China NT dollar (TWD)	31.61	0.02	-0.53
Thai baht (THB)	32.70	-0.31	-3.65
Vietnamese dong (VND)	26,333.50	0.03	-0.13



NIE = Newly Industrialized Economies



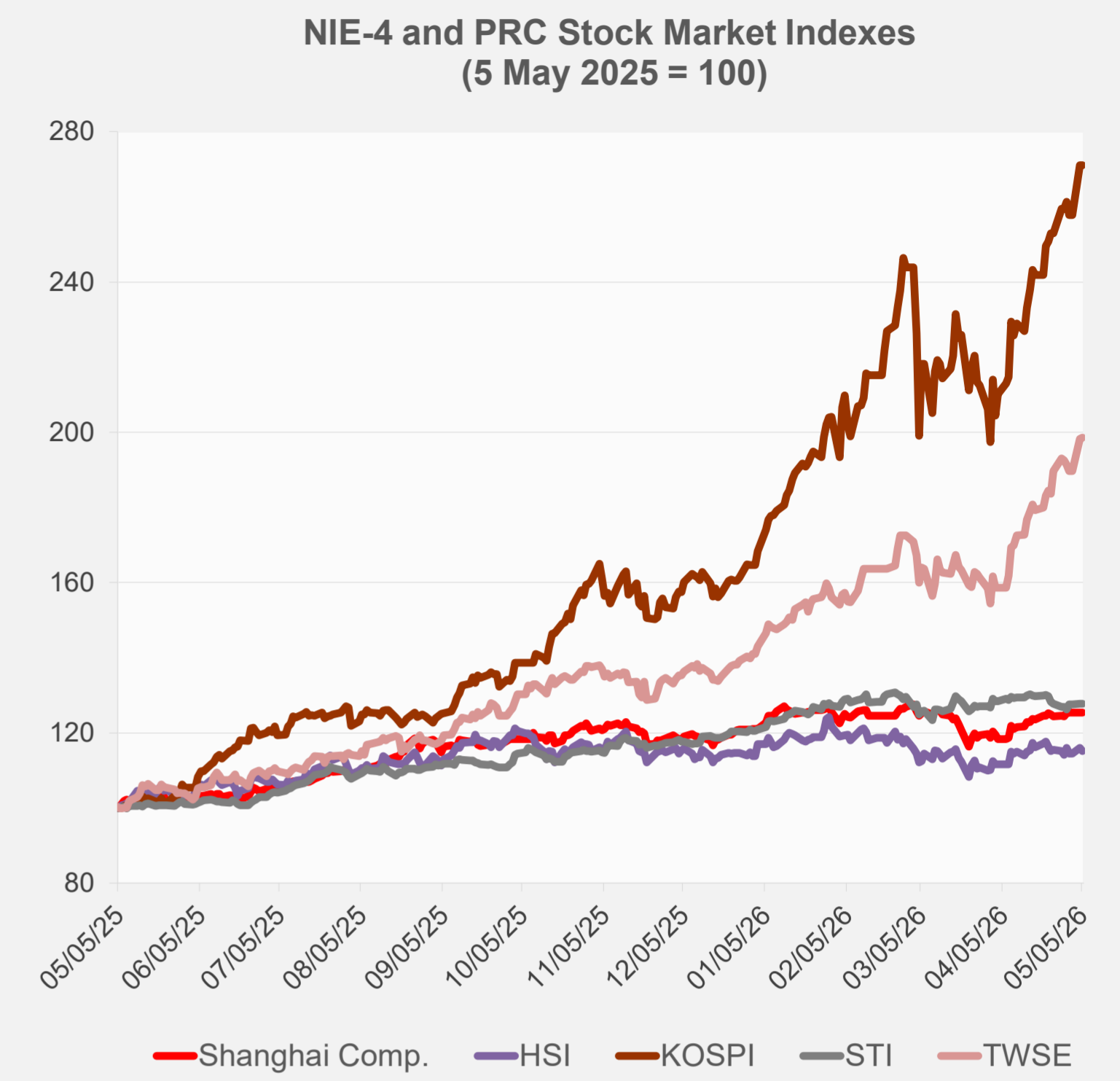
Note: Negative/Decreasing values indicate depreciation of local currency, and positive/increasing values indicate appreciation.
Source: ADB calculations using data from Bloomberg and Haver Analytics.



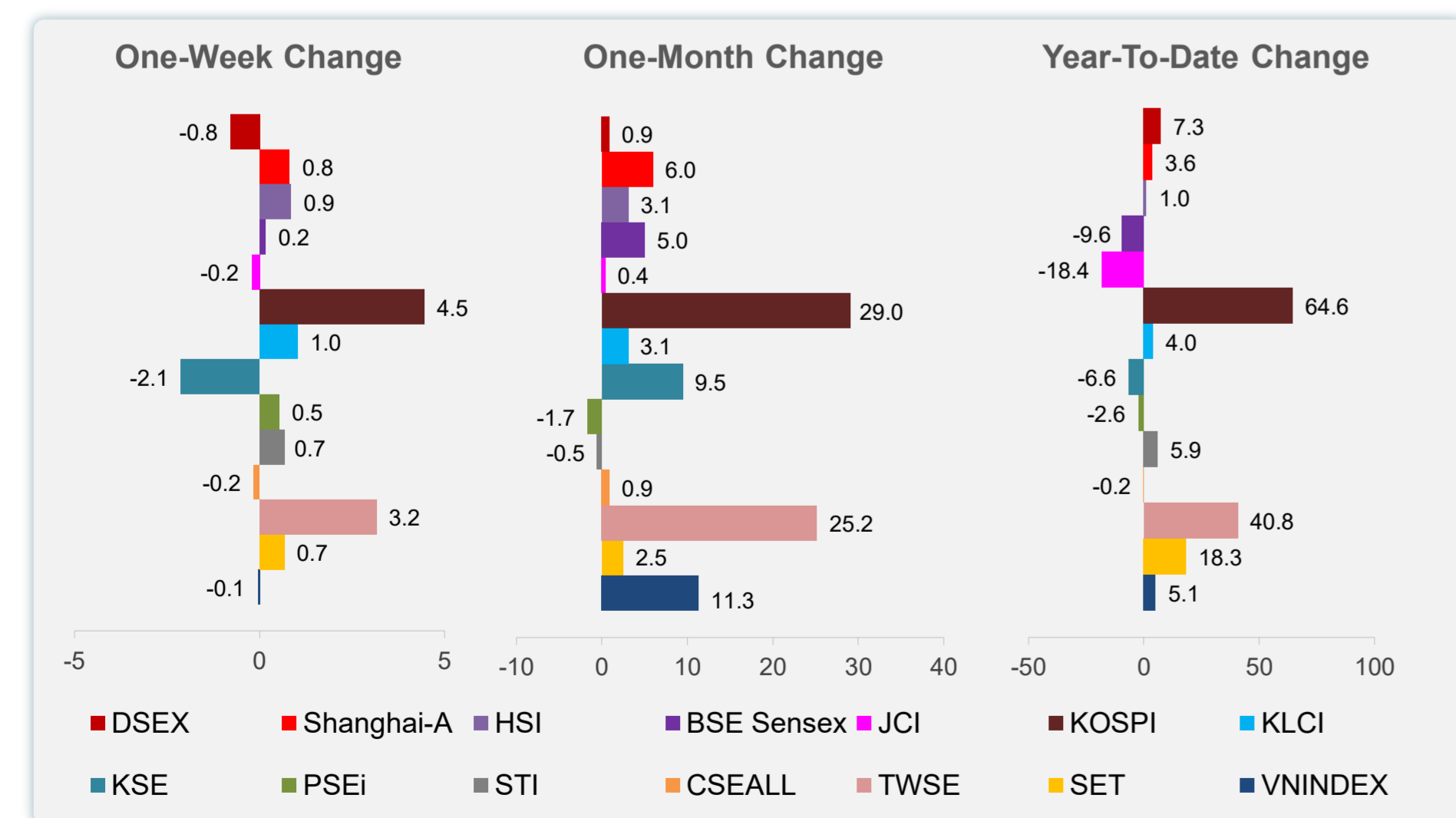
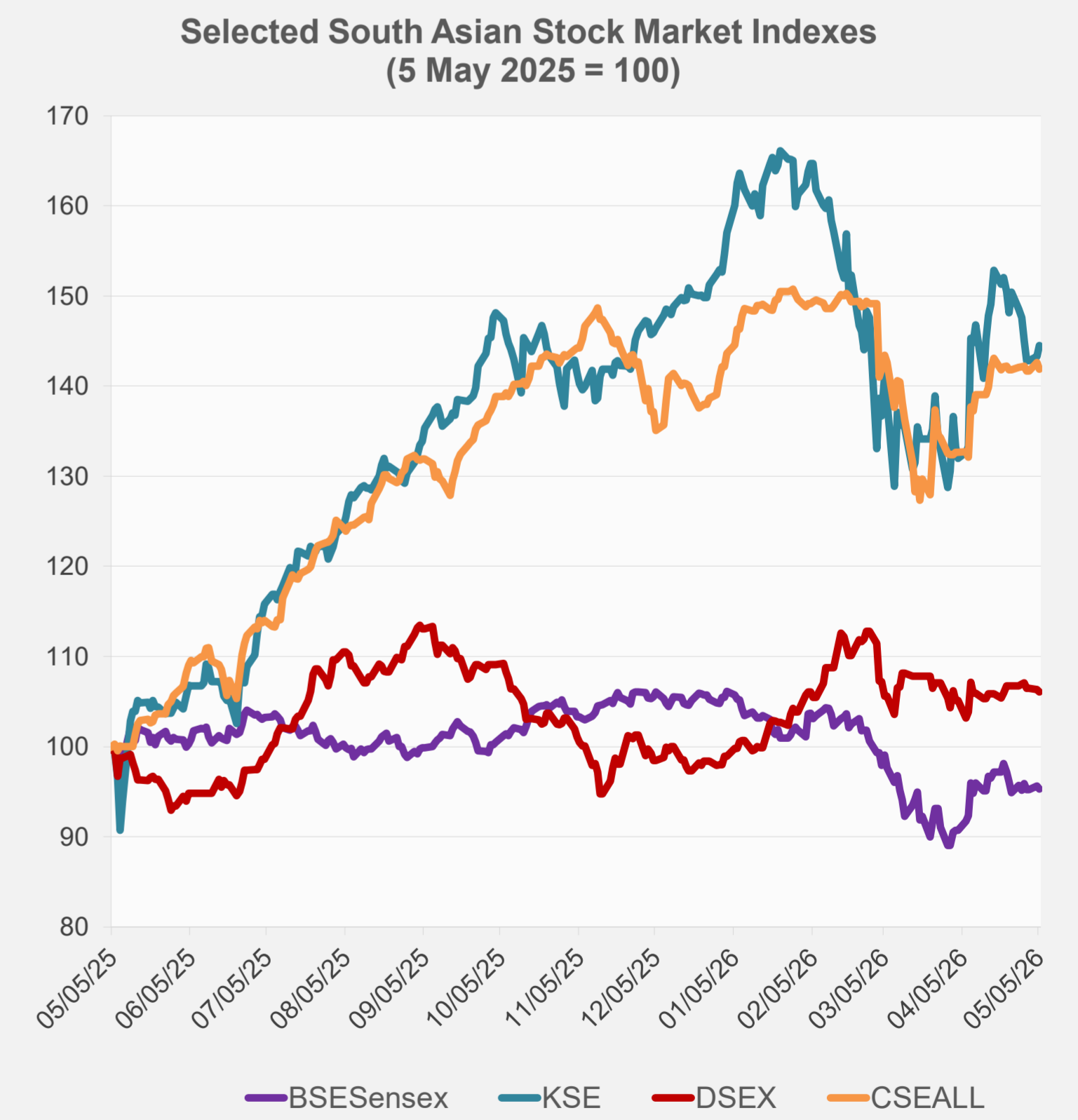
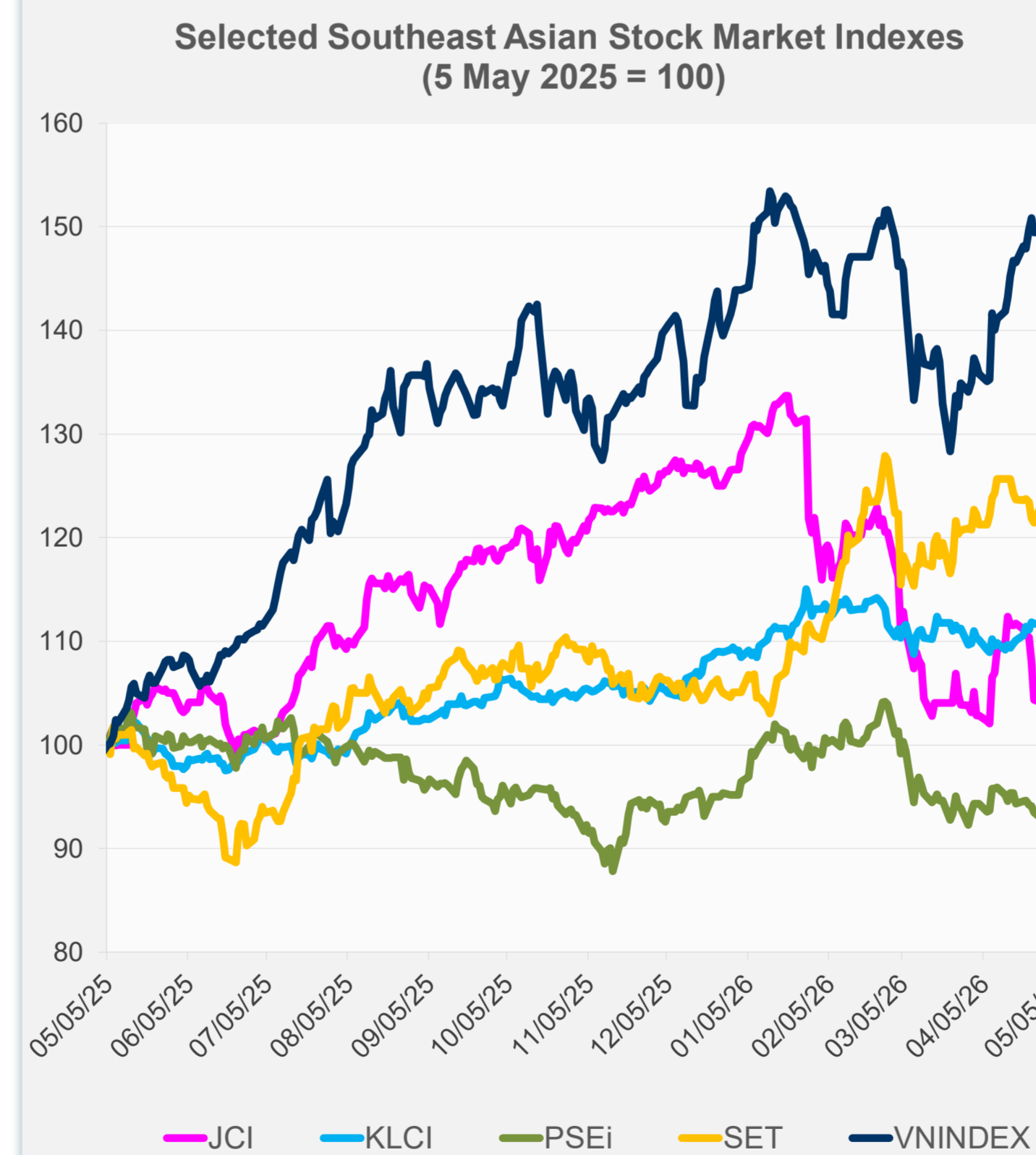
Source: Haver Analytics.

Daily Market Watch
STOCK INDEXES

	Latest Closing	% change from Previous Day	% change from 01-Jan-26
US Dow Jones Ind Avg	49,298.25	0.73	2.57
US NASDAQ	25,326.13	1.03	8.97
US S&P 500	7,259.22	0.81	6.04
UK FTSE 100	14,495.77	0.88	28.72
EURO STOXX 50	5,869.63	1.84	1.35
Japan NIKKEI 225	59,513.12	0.00	18.22
Bangladesh DSEX	5,267.23	-0.20	7.26
PRC Shanghai Comp.	4,112.16	0.00	3.61
Hong Kong, China HSI	25,898.61	-0.76	1.05
India BSE Sensex	77,017.79	-0.33	-9.59
Indonesia JCI	7,057.11	1.22	-18.39
Korea, Rep. of KOSPI	6,936.99	0.00	64.61
Malaysia KLCI	1,747.43	0.44	4.01
Pakistan KSE 100	164,858.00	0.84	-6.58
Philippines PSEi	5,898.08	-0.74	-2.56
Singapore STI	4,920.61	-0.08	5.91
Sri Lanka CSEALL	22,584.30	-0.49	-0.18
Taipei, China TWSE	40,769.29	0.16	40.76
Thailand SET	1,490.10	-0.24	18.29
Viet Nam VNINDEX	1,874.85	1.12	5.06



NIE = Newly Industrialized Economies



Sources: ADB calculations using data from Bloomberg and CEIC Data Company.



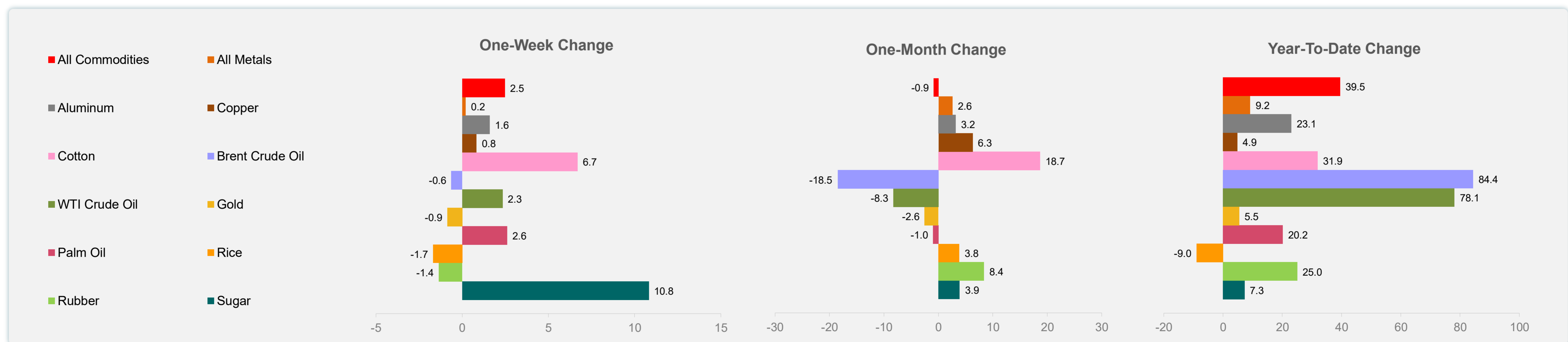
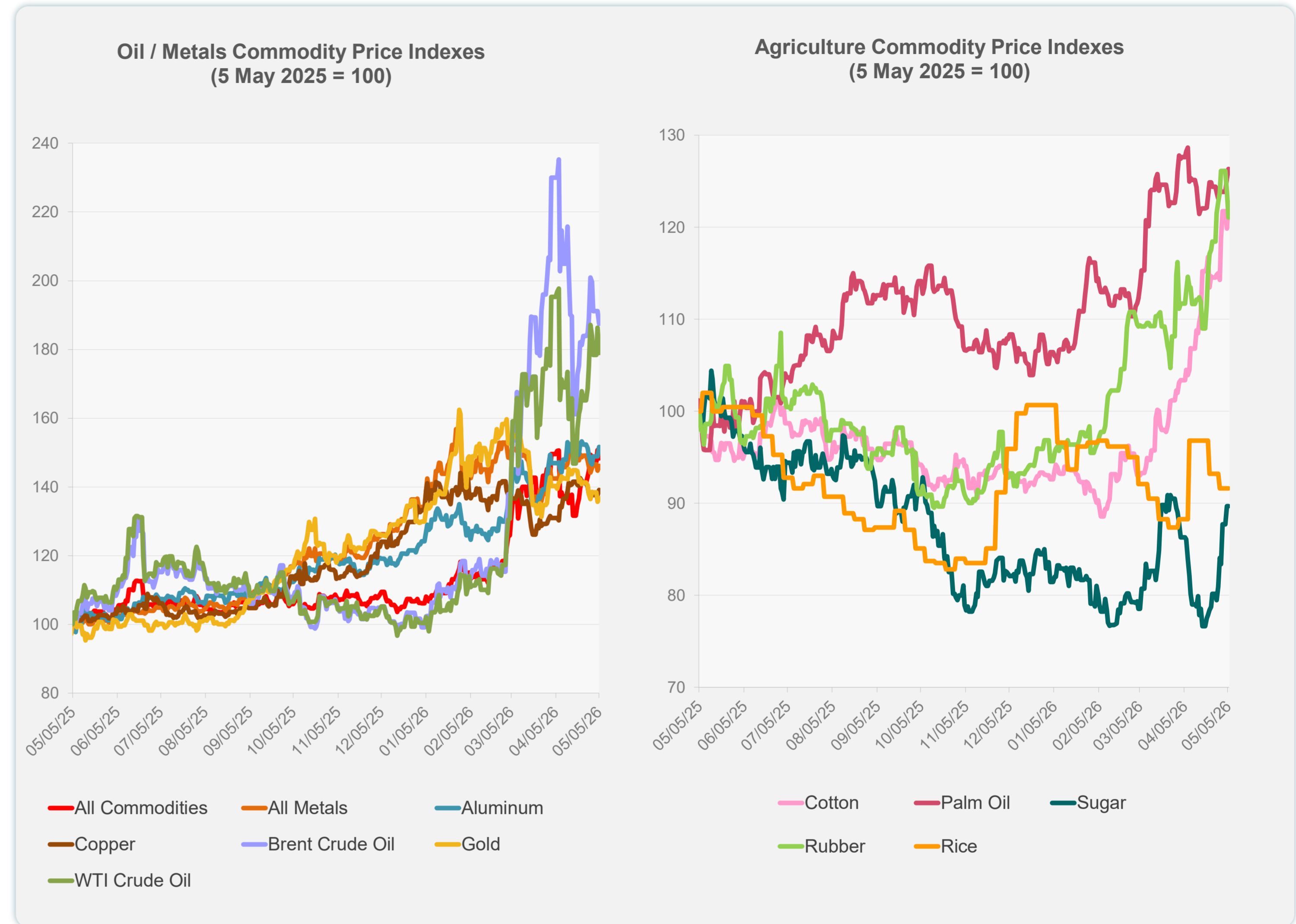
Sources: ADB calculations using data from Bloomberg and CEIC Data Company.

Daily Market Watch
COMMODITY PRICES

	Unit	Latest Closing	% change from Previous Day	% change from 01-Jan-26
S&P All Commodities	US\$	765.14	-1.63	39.49
S&P All Metals	US\$	484.75	0.98	9.24
Aluminum	US\$/metric ton	3,652.13	1.85	23.05
Copper	US\$/metric ton	13,059.15	1.11	4.86
Cotton	US cents/lb	81.80	2.35	31.89
Brent Crude Oil	US\$/barrel	115.14	-1.89	84.39
WTI Crude Oil	US\$/barrel	102.27	-3.90	78.11
Gold	US\$/troy oz	4,556.92	0.77	5.50
Palm Oil	US\$/metric tonne	1,164.01	0.84	20.17
Rice ¹	US\$/metric ton	406.00	0.00	-8.97
Rubber ²	US\$/kg	268.80	-2.25	25.02
Sugar	US cents/lb	15.87	0.00	7.30

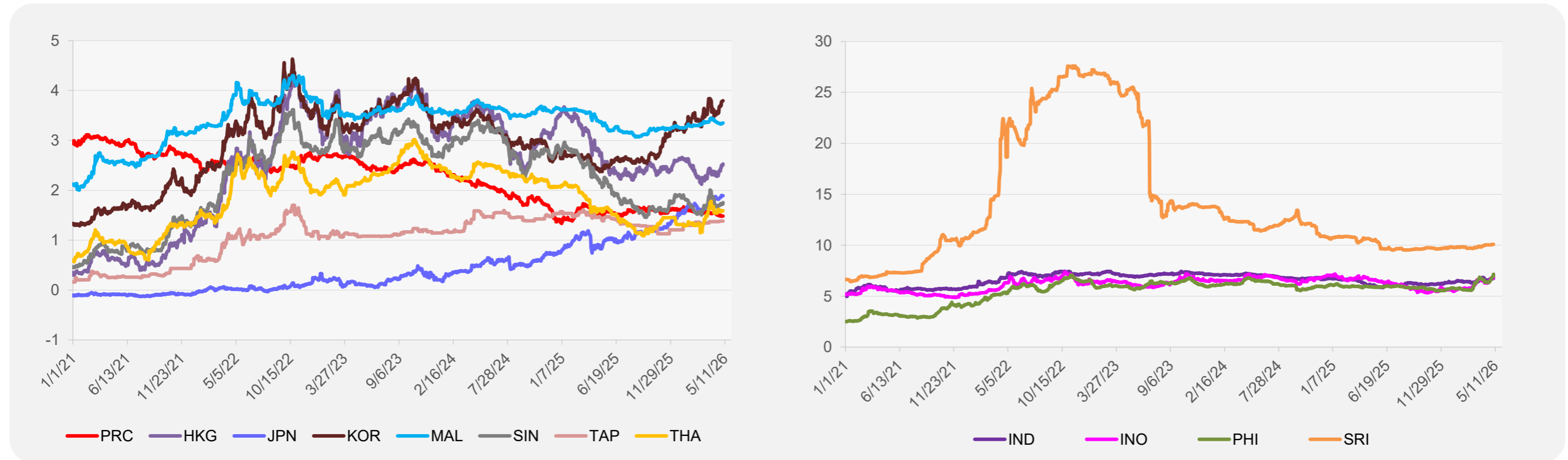
¹ Latest closing price from 22 April 2026.

² Singapore Exchange, Ribbed Smoked Sheet Rubber.

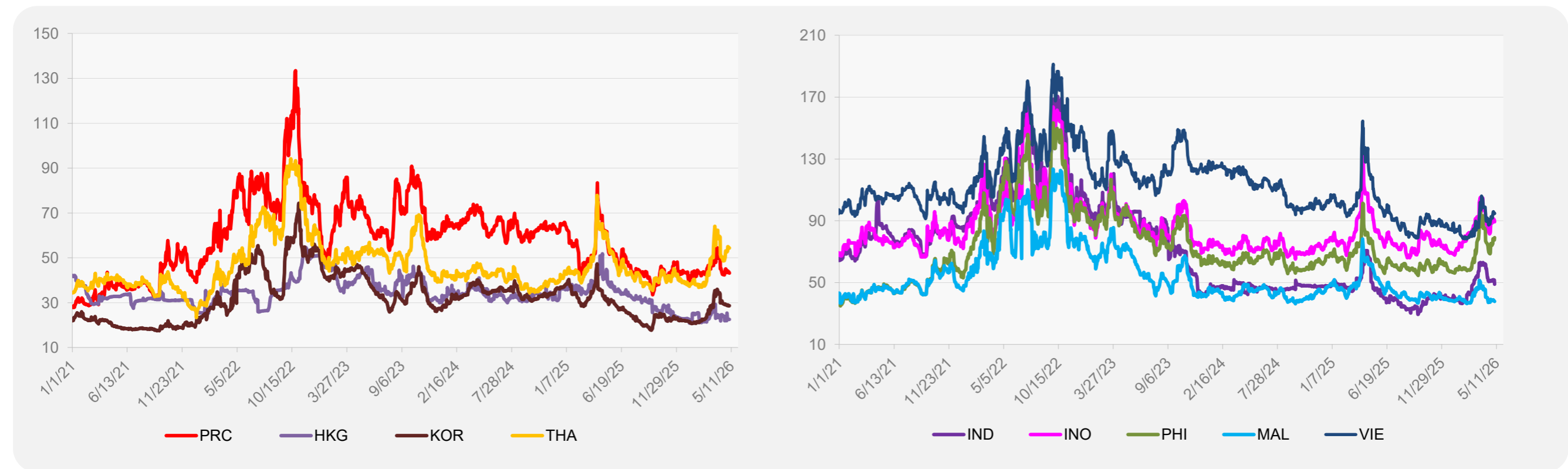


Source: ADB calculations using data from Bloomberg.

5-YEAR LOCAL CURRENCY GOVERNMENT BOND YIELDS (%)



5-YEAR CREDIT DEFAULT SWAP¹



¹ In USD and based on sovereign bonds.
Source: ADB calculations using data from Bloomberg.